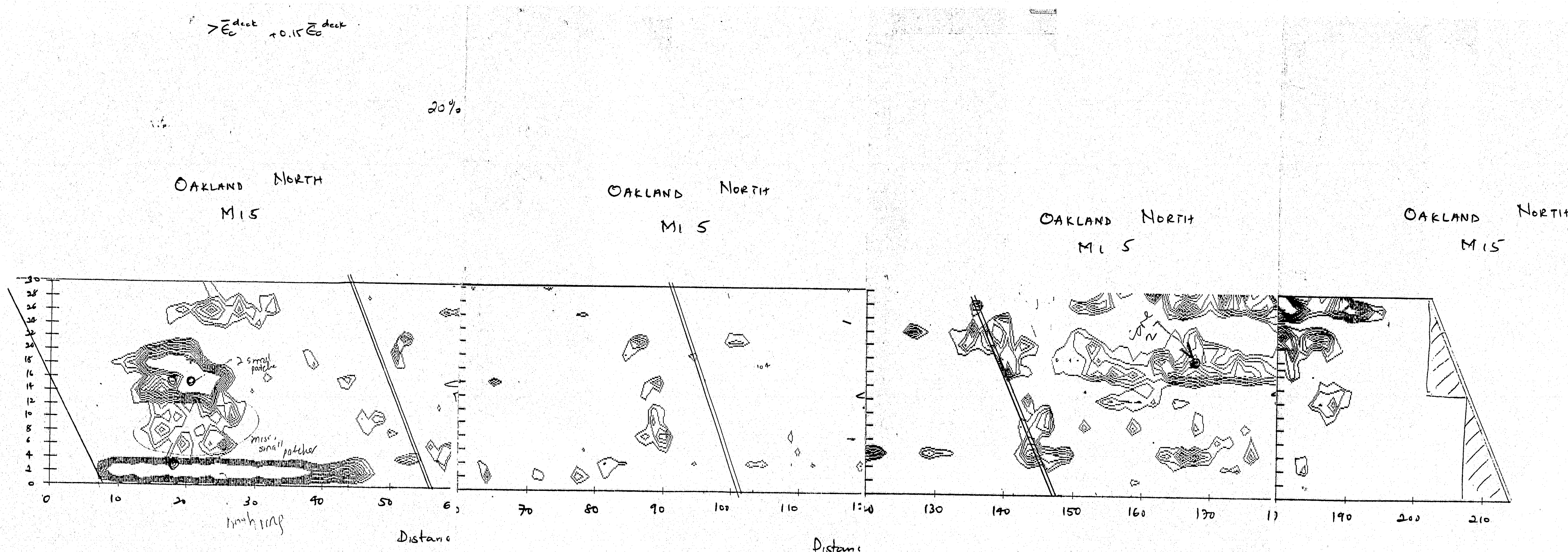
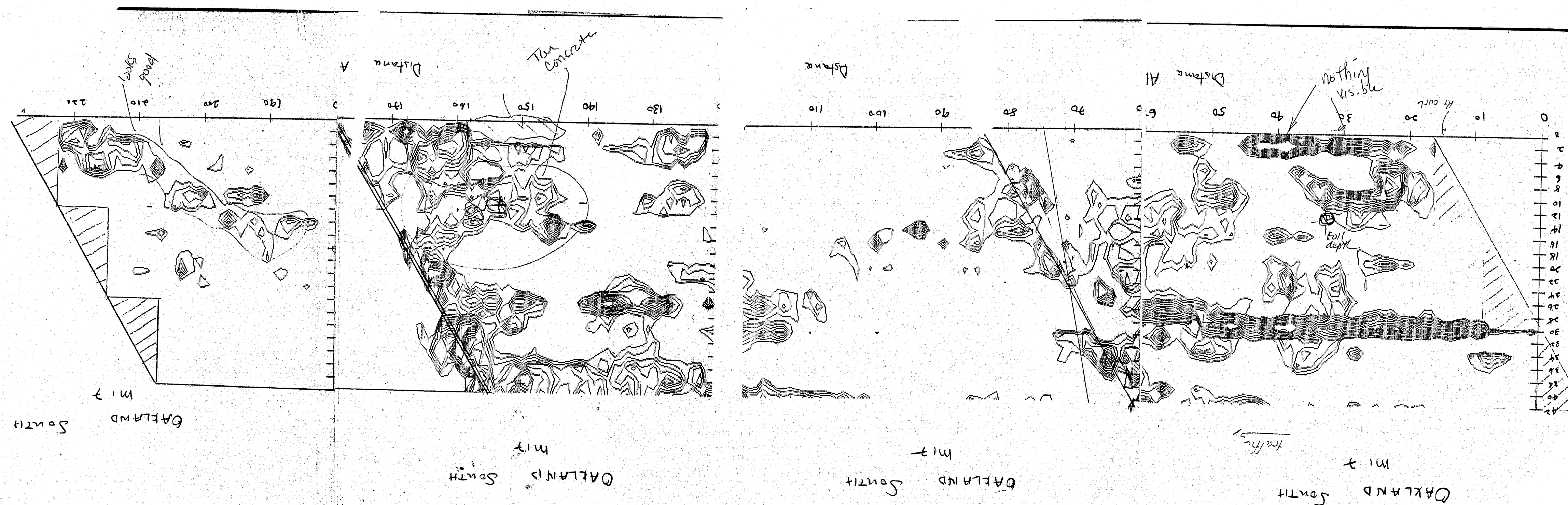


F.W.A. REG. NO.	STATE	PROJECT NUMBER	SHEET NO.	TOTAL SHEETS
1	MAINE			



PROJECT DESIGN ENGINEER	BY	DATE
DESIGN - DETAILED	RM	10-89
CHECKED	EDH	
REVISIONS		
FIELD CHANGES		

BRUNING 45710.1

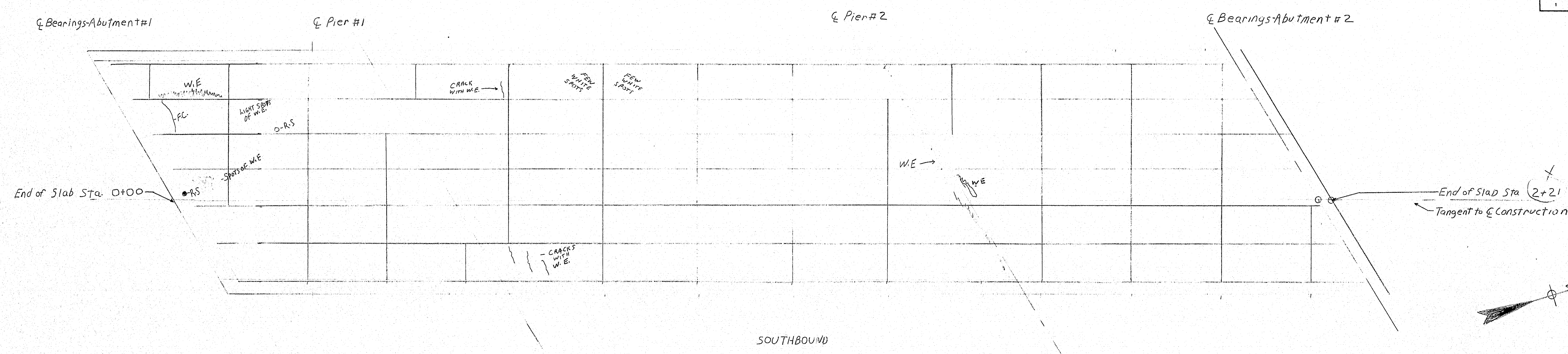
119-404

STATE OF MAINE
DEPARTMENT OF TRANSPORTATION

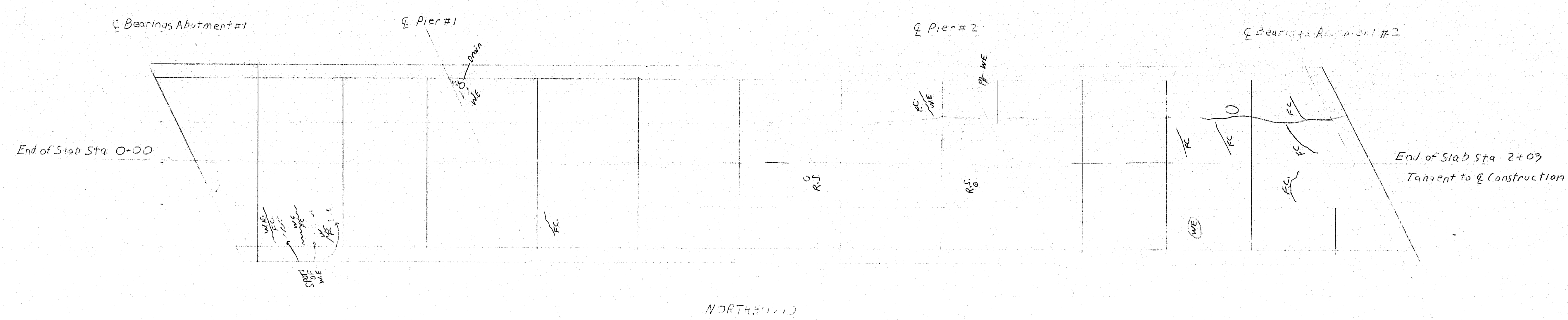
INTERSTATE #95
OVER
OAKLAND ROAD
IN THE CITY OF
WATERVILLE

Radar Survey - Maser Interp
SHEET OF AUGUSTA, MAINE JUNE 1989

F.R.W.A. REG. NO.	STATE	PROJECT NUMBER	SHEET NO.	TOTAL SHEETS
1	MAINE			



PLAN
Scale 1"=10'



Legend
 WE - Water Erosion
 CR - Cracks
 D-R-S - Drainage Right of Way

PROJECT DESIGN ENGINEER	DATE
DESIGN - DETAILED	3-21-79
CHECKED	CDH
REVISIONS	MPK
FIELD CHANGES	

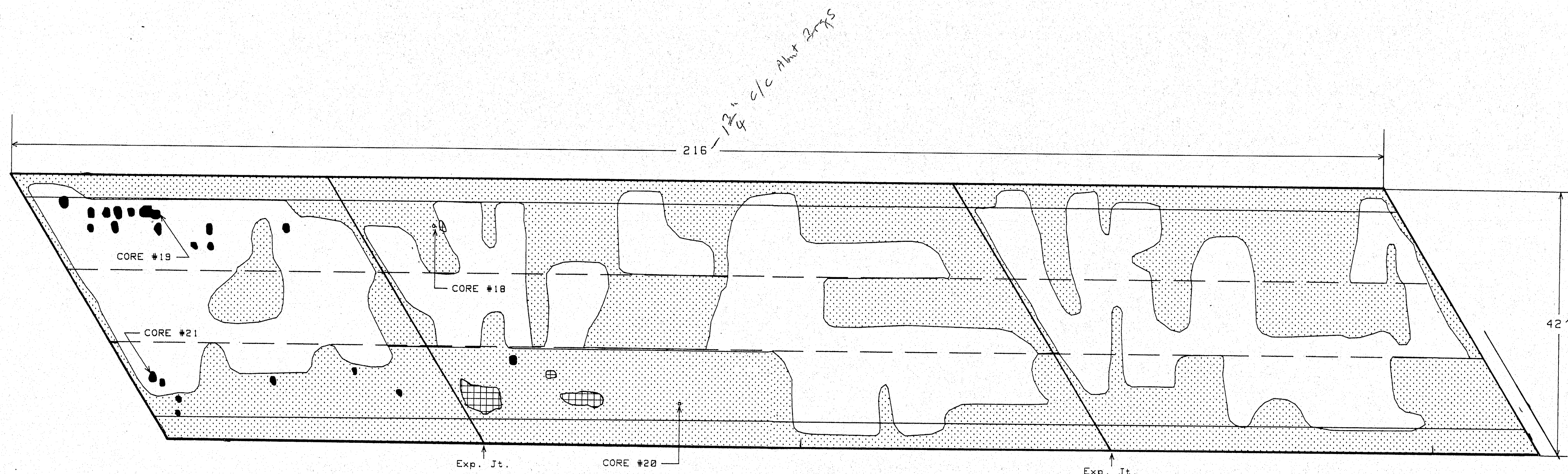
PLANS

119-405

STATE OF MAINE
DEPARTMENT OF TRANSPORTATION

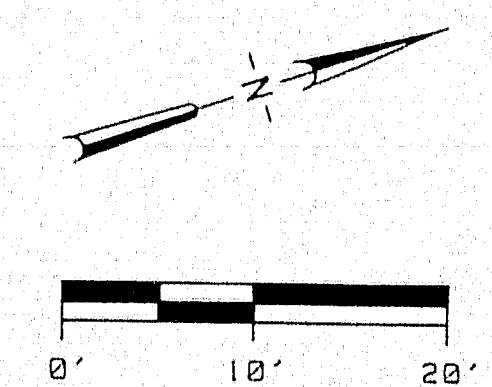
INTERSTATE #95
OVER
OAKLAND ROAD
IN THE CITY OF
WATERVILLE
Bottom of Slab

SHEET OF AUGUSTA, MAINE / March 1989



AREAS	SOUTHBOUND LANES (sq. ft.)
Total Area	9,072
Delamination	27 (0.3%)
Debond	5,073 (55.9%)
Rephalt Patch	33 (0.4%)
Concrete Patch	None
Inspection Date:	June 20, 1989
Surface Material: Asphaltic Concrete Overlay	

- LEGEND**
- Delamination
 - Debond
 - ⊕ Rephalt Patch
 - ⊙ Concrete Patch
 - ◐ Area In Shade



216' 12"
6
228'

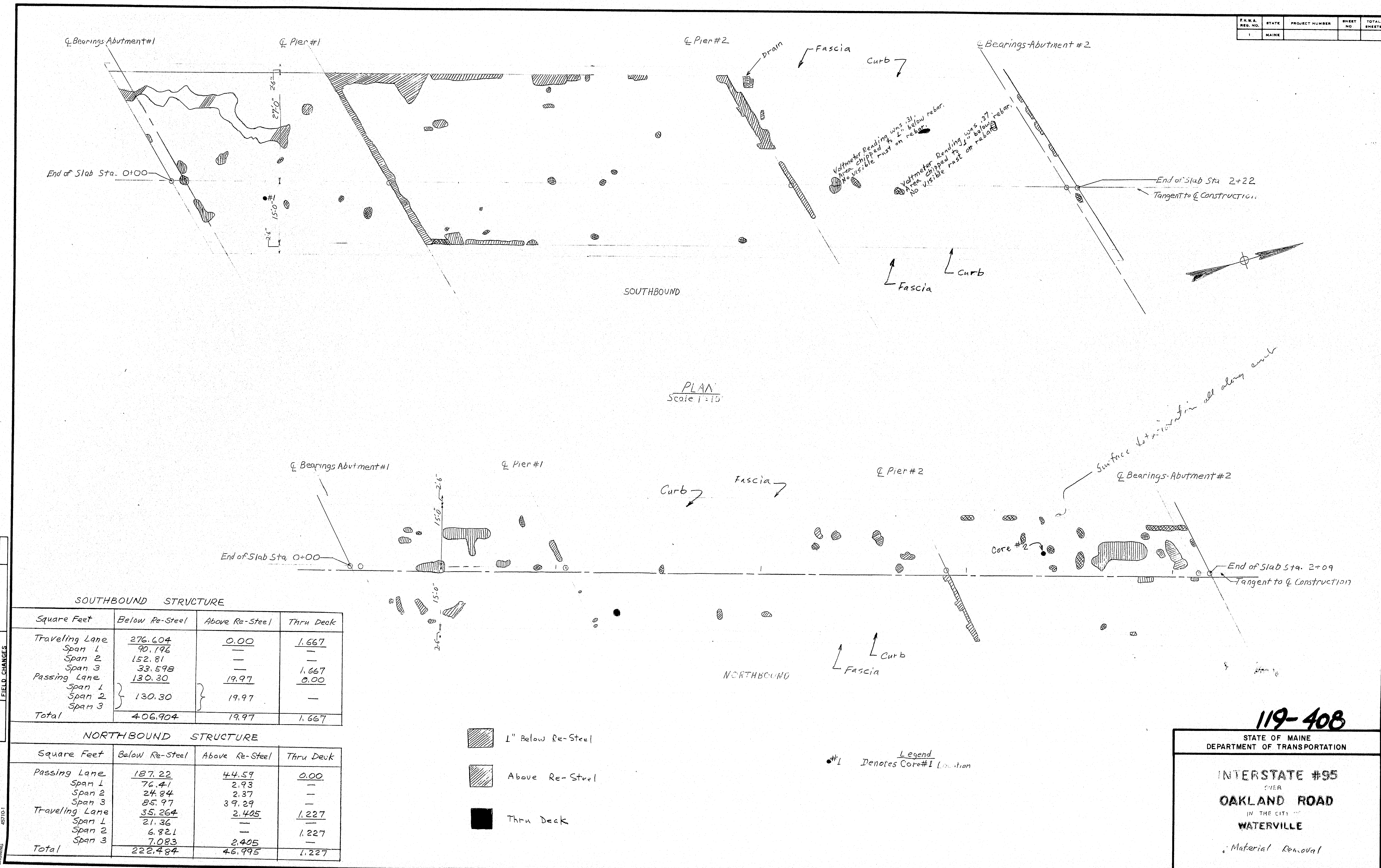
Donohue

INFRARED THERMOGRAPHIC INVESTIGATION OF
INTERSTATE 95 SOUTHBOUND OVER OAKLAND ROAD
WATERVILLE, MAINE
MAINE DEPARTMENT OF TRANSPORTATION

Sheet No.	5 of 6
File No.	
Project No.	16997
Drawing No.	5

Date	Designer	Drafter	Checker	Approver	No.	Revisions	By	Date

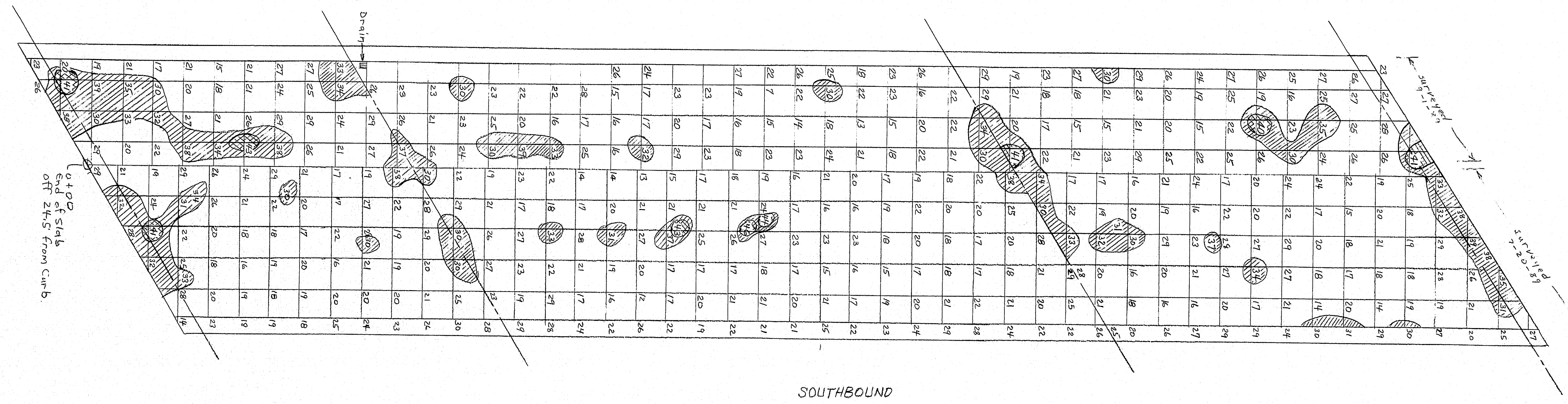
119-406



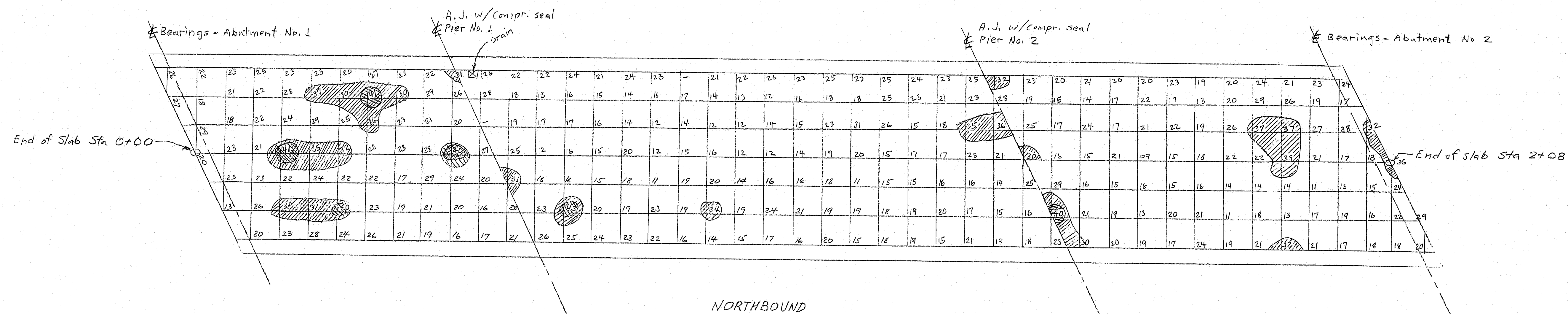
PROJECT DESIGN ENGINEER	BY	DATE
DESIGN - DETAILED	Ruhm	7/79
CHECKED	CDH	
REVISIONS		
FIELD CHANGES		

Passing Lane Surveyed 7-6-89 NB, 7-20-87 SB
 Driving " 9-25-89 NB, 9-1-89 SB

REVISION 05701

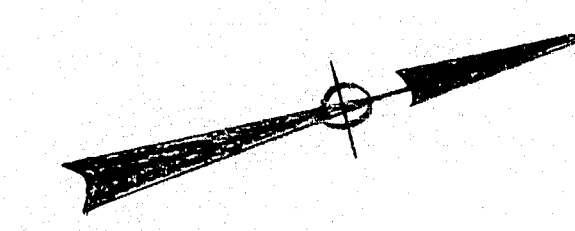


SOUTHBOUND



NORTHBOUND

F.W.A. REG. NO.	STATE	PROJECT NUMBER	SHEET NO.	TOTAL SHEETS
1	MAINE			



119-409

STATE OF MAINE
 DEPARTMENT OF TRANSPORTATION

INTERSTATE #95
 OVER
 OAKLAND ROAD
 IN THE CITY OF
 WATERVILLE

Voltmeter Survey

SHEET OF AUGUSTA, MAINE Sept. 1989